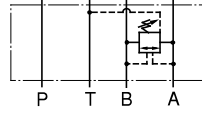


Brake Modular Valves

Specifications

Model Numbers	Max. Operating Pressure MPa	Max. Flow L/min
MBR-01-* -30	25	35

Graphic Symbol



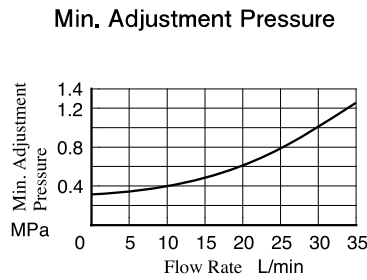
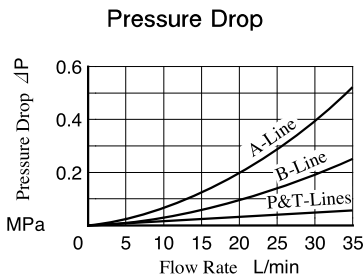
Model Number Designation

MBR	-01	-C	-30
Series Number	Valve Size	Pres. Adj. Range MPa	Design Number
MBR: Brake Valve	01	C: ★-14 H: 7-21	30

★See the "Min. Adjustment Pressure" of this page.

Typical Performance Characteristics

Hydraulic Fluid: Viscosity 35 mm²/s, Specific Gravity 0.850



Instructions

- The minimum adjustment pressure equals the value obtained from the minimum adjustment pressure characteristics plus the tank line back pressure of the left. This back pressure should include the value of the T-line pressure drop characteristics of the valves stacked to the base plate side of the modular valve.
- To make pressure adjustment, loosen the lock nut and turn the pressure adjustment screw clockwise or anti-clockwise. For an increase of pressure, turn the screw clockwise. Be sure to re-tighten the lock nut firmly after making adjustment to the pressure.

MBR-01

5.5 Dia. Through 4 Places
Lock Nut 13 Hex.
Pressure Adj. Screw 4 Hex. Soc.
INC.
Approx. Mass.....1.3 kg

Model Numbers	L1	L2
MBR-01-C	161	107
MBR-01-H	176.5	122.5

List of Seals

MBR-01

Item	Name of Parts	Part Numbers	Qty.
14	O-Ring	OR NBR-90 P7-N	1
15	O-Ring	OR NBR-90 P9-N	4
16	O-Ring	OR NBR-90 P18-N	1
17	O-Ring	OR NBR-70-1 P20-N	1