

# Check Modular Valves

## Specifications

Model Numbers	Max. Operating Pressure MPa	Max. Flow L/min
MCP-03-* -70	35	120
MCA-03-* -70		
MCB-03-* -70		
MCW-03-* -70		
MCT-03-* -70		

## Model Number Designation

MCP	-03	-0	-70
Series Number	Valve Size	Cracking Pressure MPa	Design Number
MCP: Check Valve for P-Line MCA: Check Valve for A-Line MCB: Check Valve for B-Line MCW: Check Valve for A&B-Lines MCT: Check Valve for T-Line	<b>03</b>	<b>0:</b> 0.035 <b>2:</b> 0.2 <b>4:</b> 0.4	<b>70</b>

## Instructions

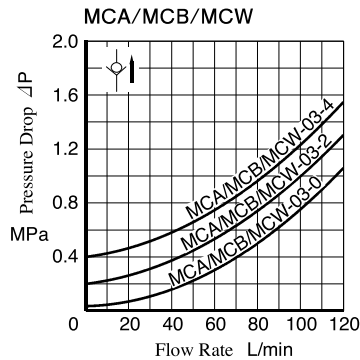
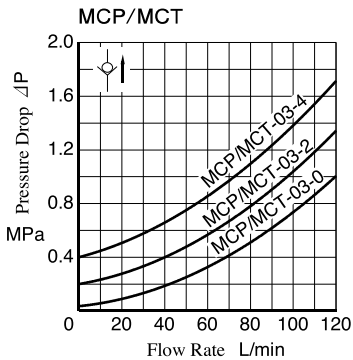
### Tank Line Used

Check Valve function of MCT-03 is included in TA-Line.  
Therefore, the tank line for a circuit that used this valve must be TA-Line.

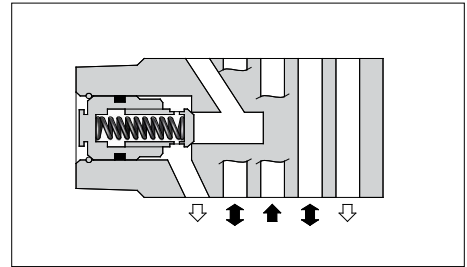
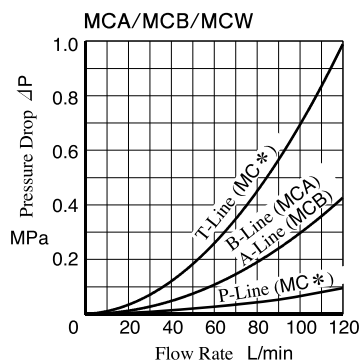
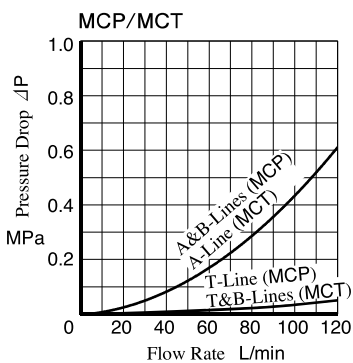
## Typical Performance Characteristics

Hydraulic Fluid: Viscosity 35 mm<sup>2</sup>/s, Specific Gravity 0.850

Pressure Drop for Free Flow

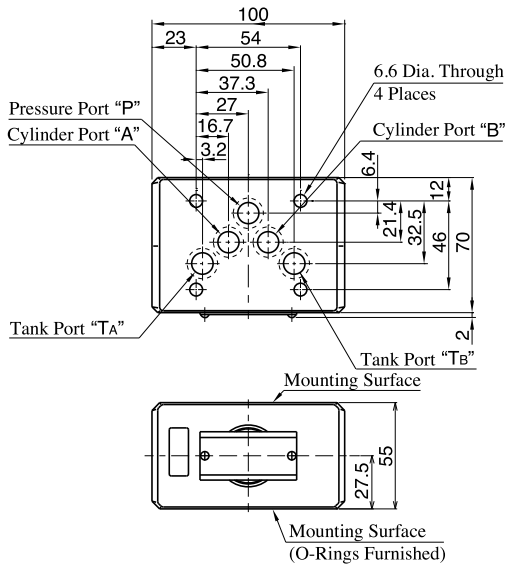


Pressure Drop



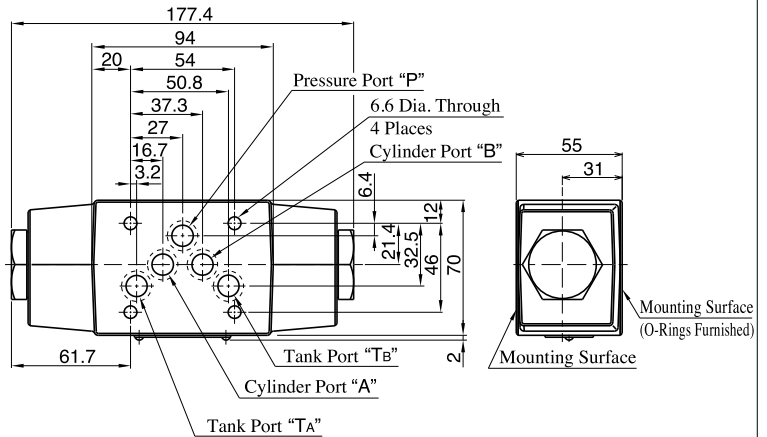
Model Numbers	Graphic Symbols	
MCP-03		
MCA-03		
MCB-03		
MCW-03		
MCT-03		

## MCP-03



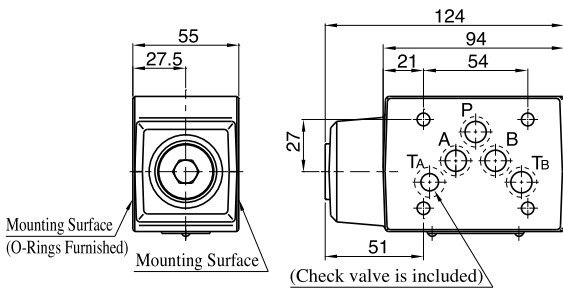
Approx. Mass.....2.6 kg

## MCW-03



Approx. Mass.....3.7 kg

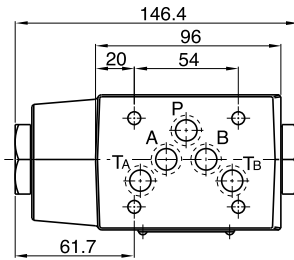
## MCT-03



Approx. Mass.....3.0 kg

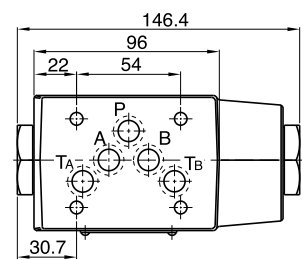
For other dimensions, refer to "MCW-03" in the drawing above.

## MCA-03



For other dimensions, refer to "MCW-03" in the drawing above.

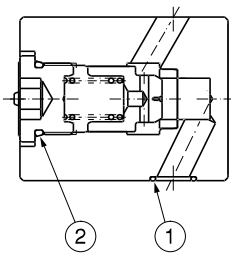
## MCB-03



Approx. Mass.....3.0 kg

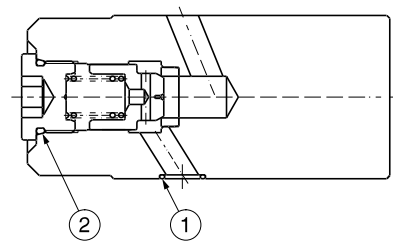
## List of Seals

### MCP-03



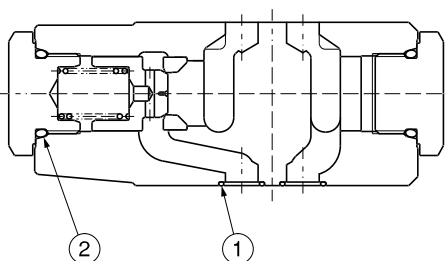
Item	Name of Parts	Part Numbers	Qty.
1	O-Ring	AS568-014 (NBR-90)	5
2	O-Ring	OR NBR-90 P21-N	1

### MCT-03



Item	Name of Parts	Part Numbers	Qty.
1	O-Ring	AS568-014 (NBR-90)	5
2	O-Ring	OR NBR-90 P21-N	1

### MCA-03 MCB-03 MCW-03



### MCA-03

Item	Name of Parts	Part Numbers	Qty.
1	O-Ring	AS568-014 (NBR-90)	5
2	O-Ring	OR NBR-90 P24-N	2

- MCB-03: Check valve is assembled on the right side.
- MCW-03: Check valve is assembled on the both sides.