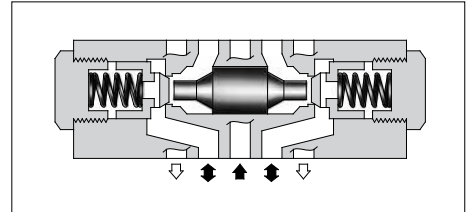


Pilot Operated Check Modular Valves

Specifications

| Model Numbers | | Max. Operating Pressure MPa (PSI) | Max. Flow L/min (U.S.GPM) |
|---------------------------------|---------------|--------------------------------------|------------------------------|
| Standard | MP*-03-*-20 | 25 (3630) | 70 (18.5) |
| Low Pilot Pressure Control Type | MP*-03-*-2001 | | |



Model Number Designation

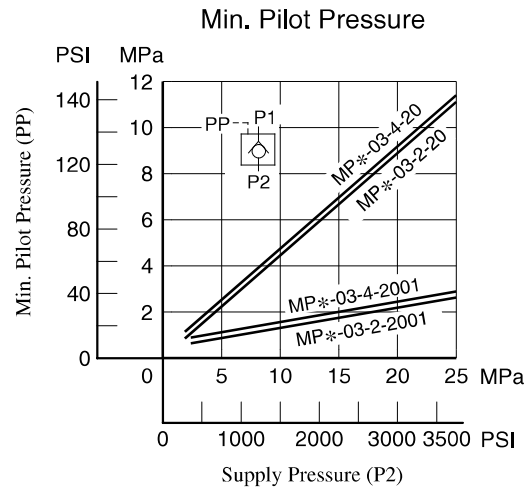
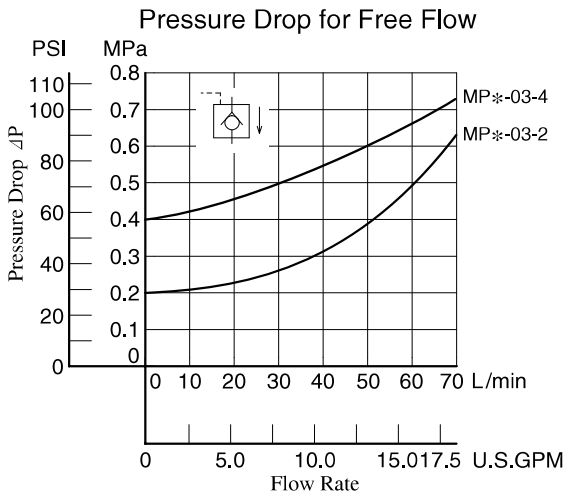
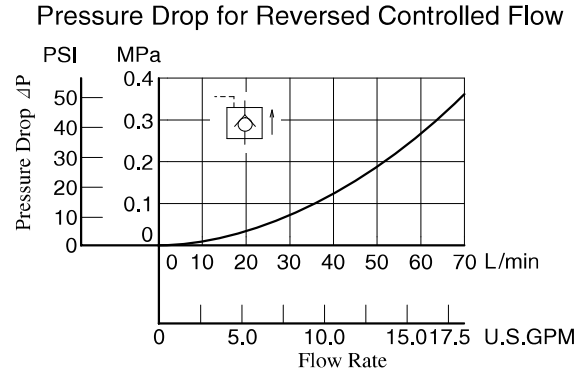
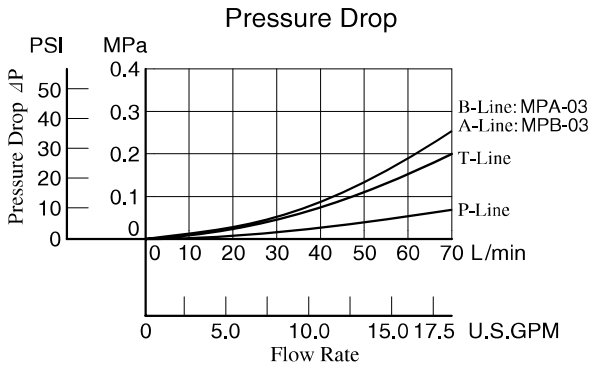
| F- | MPA | -03 | -2 | -20 | * |
|---|---|------------|--|---|-----------------|
| Special Seals | Series Number | Valve Size | Cracking Pressure MPa (PSI) | Design Number | Design Standard |
| F: Special Seals for Phosphate Ester Type Fluids (Omit if not required) | MPA : Pilot Operated Check Valve for A-Line MPB : Pilot Operated Check Valve for B-Line MPW : Pilot Operated Check Valve for A&B-Lines | 03 | 2 : 0.2 (29) 4 : 0.4 (58) | 20 (Standard) 2001 (Low Pilot Pressure Control Type) | Refer to ★ |

★ Design Standards: None Japanese Standard "JIS", European Design Standard and N. American Design Standard

| Model No. | Graphic Symbols | Detailed Graphic Symbols |
|-----------|-----------------|--------------------------|
| MPA-03 | | |
| MPB-03 | | |
| MPW-03 | | |

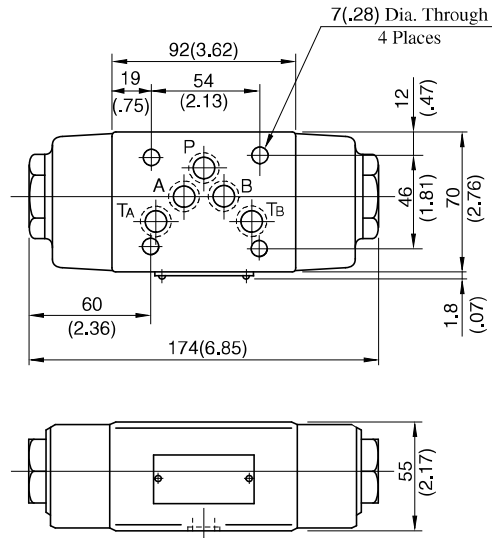
Typical Performance Characteristics

Hydraulic Fluid: Viscosity 35 mm²/s (164 SSU), Specific Gravity 0.850



MPA-03-*-20/2001
 MPB-03-*-20/2001
 MPW-03-*-20/2001

**DIMENSIONS IN
 MILLIMETRES (INCHES)**

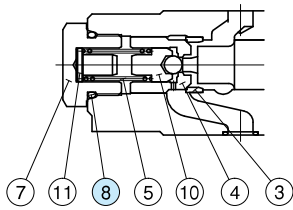
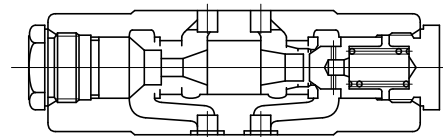
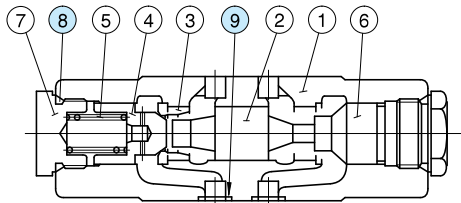


Approx. Mass..... 3.5 kg (7.7 lbs.)

■ Spare Parts List

MPA-03-*-20

MPB-03-*-20



Low Pilot Pressure Control Type
 (MPA-03-*-2001)

● List of Seals

| Item | Name of Parts | Part Numbers | Qty. | Remarks |
|------|---------------|--------------|------|---|
| 8 | O-Ring | SO-NB-P24 | 2 | Included in Seal Kit Kit No.: KS-MPA-03-20 |
| 9 | O-Ring | SO-NB-A014 | 5 | |

MPW-03-*-20

