

Reducing Modular Valves

Specifications

Model Numbers	Max. Operating Pressure MPa	Max. Flow L/min
MR *-03-A-70*	35	80
MR *-03-B/C/H-70		120

★If the pressure is set below 1.2 MPa, the maximum flow is limited. See the "Min. Adjustment Pressure vs. Max. Flow" of this page.

Model Number Designation

MRP	-03	-B	-70
Series Number	Valve Size	Pres. Adj. Range MPa	Design Number
MRP: Reducing Valve for P-Line MRA: Reducing Valve for A-Line MRB: Reducing Valve for B-Line	03	A: ★-3.5 B: 1-7 C: 3.5-14 H: 7-31.5	70

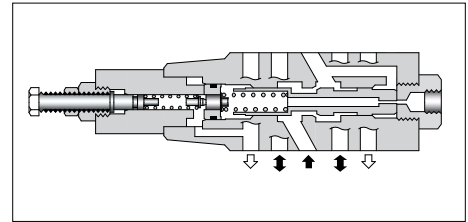
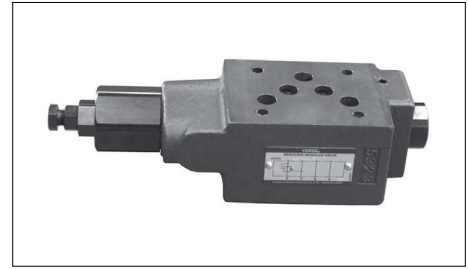
★See the "Min. Adjustment Pressure vs. Max. Flow" of this page.

Instructions

The minimum adjustment pressure equals the value obtained from the minimum adjustment pressure characteristics plus the tank line back pressure of this page. This back pressure should include the value of the T-line pressure drop characteristics of the valves stacked to the base plate side of the modular valve. To make pressure adjustment, loosen the lock nut and turn the pressure adjustment screw clockwise or anticlockwise. For an increase of pressure, turn the screw clockwise. Be sure to re-tighten the lock nut firmly after making adjustment to the pressure.

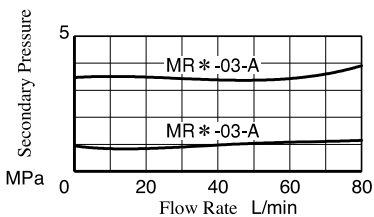
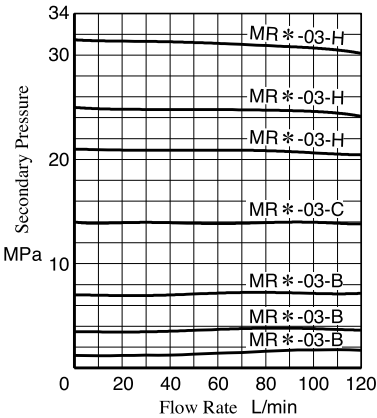
Typical Performance Characteristics

Hydraulic Fluid: Viscosity 35 mm²/s, Specific Gravity 0.850

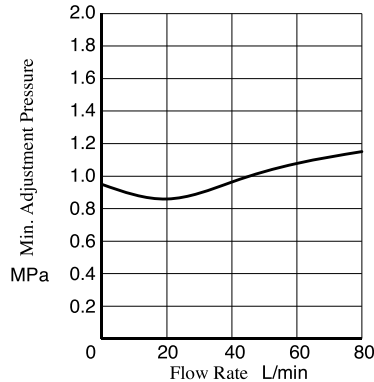


Model Numbers	Graphic Symbols	Graphic Symbols
MRP-03		
MRA-03		
MRB-03		

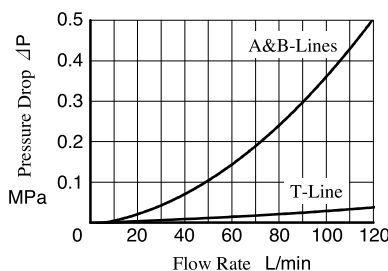
Nominal Override Characteristics
Primary Pressure 35 MPa



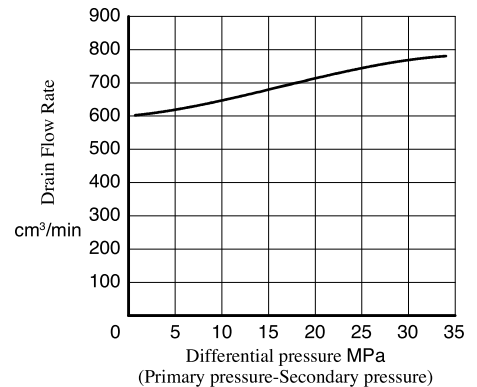
Min. Adjustment Pressure vs. Max. Flow



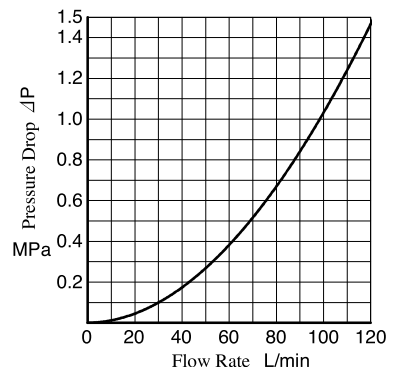
Pressure Drop

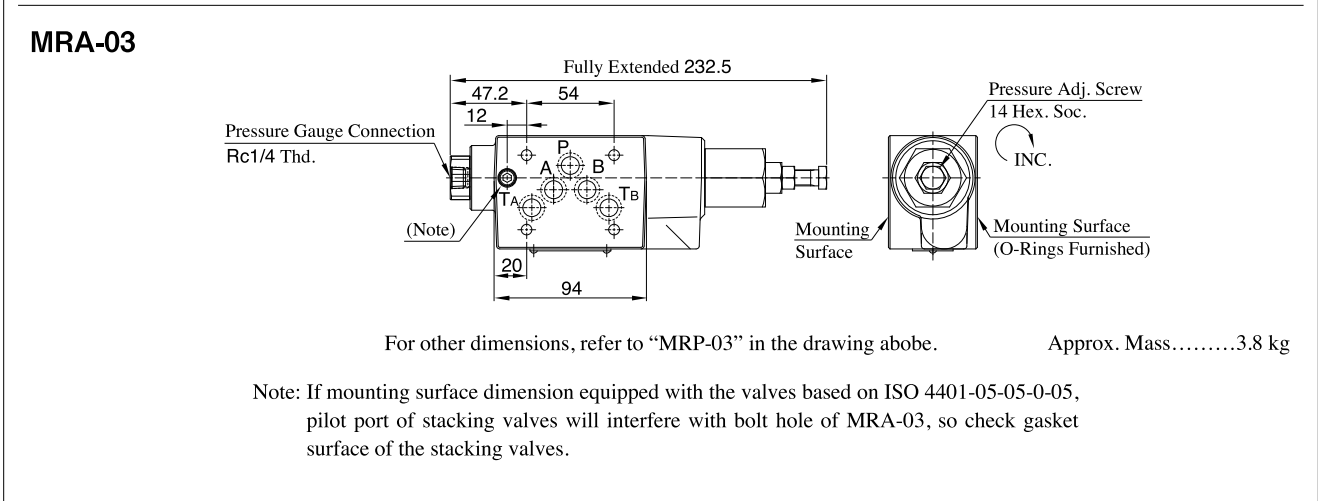
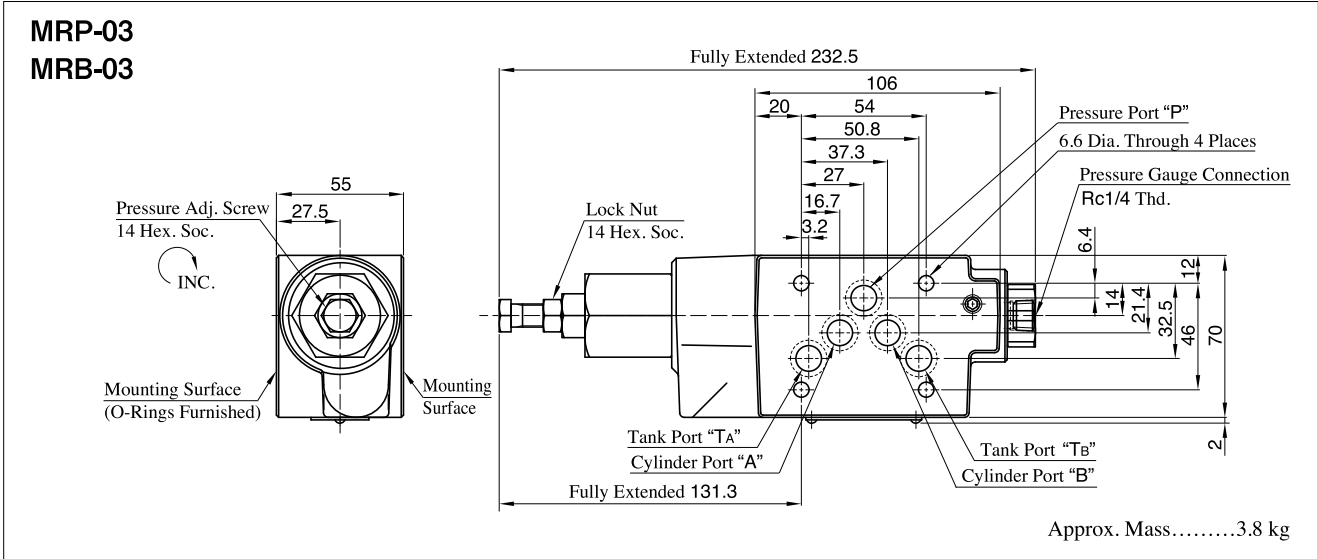


Drain Flow Rate



Pres. Drop at Spool Fully Open (P-Line)





List of Seals

MRP-03
MRA-03
MRB-03

MRP-03

Item	Name of Parts	Part Numbers	Qty.
1	O-Ring	AS568-014 (NBR-90)	5
2	O-Ring	OR NBR-70-1 P6-N	1
3	O-Ring	OR NBR-90 P16-N	1
4	O-Ring	OR NBR-90 P18-N	1
5	O-Ring	OR NBR-90 P26-N	1

- MRA-03: The pressure adjustment part is assembled on the right side.
- MRB-03: The pressure adjustment part is assembled on the left side.