

Check and Throttle Modular Valves

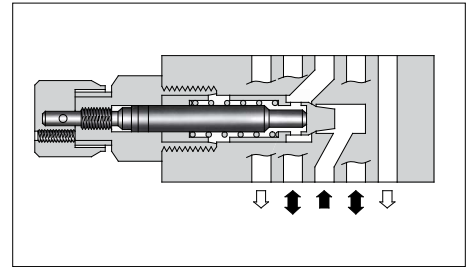
Specifications

Model Numbers	Max. Operating Pressure MPa	Max. Flow L/min
MSCP-03-20	25	70 *

★Maximum flow decreases when the differential pressure is less than 0.8 MPa. See the "Pressure Drop at Throttle Fully Open" of this page.

Model Number Designation

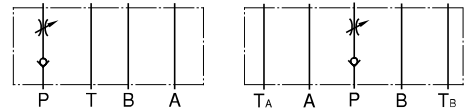
MSCP	-03	-20
Series Number	Valve Size	Design Number
MSCP: Check & Throttle Valve for P-Line	03	20



Instructions

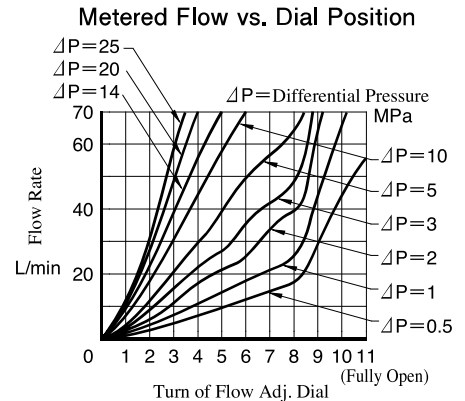
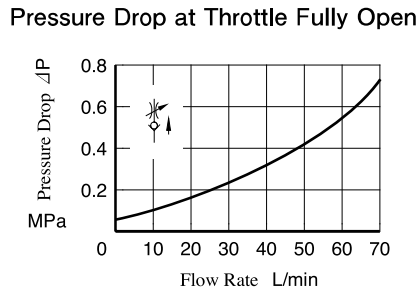
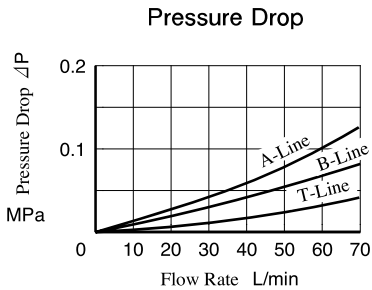
- To make flow adjustment, loosen locking screw for the dial and turn the flow adjustment dial clockwise or anti-clockwise. Be sure to re-tighten the locking screw firmly after the adjustment of the flow rate.

Graphic Symbols

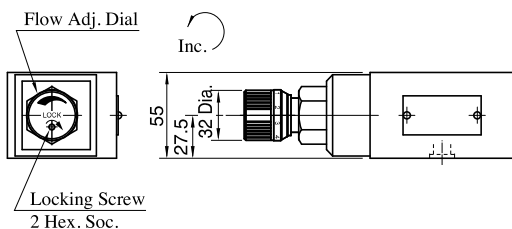
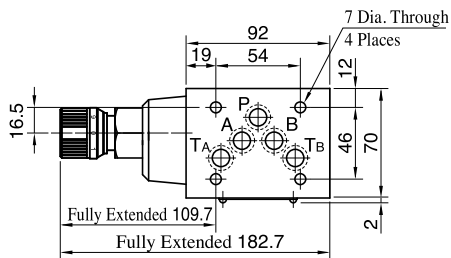


Typical Performance Characteristics

Hydraulic Fluid: Viscosity 35 mm²/s, Specific Gravity 0.850



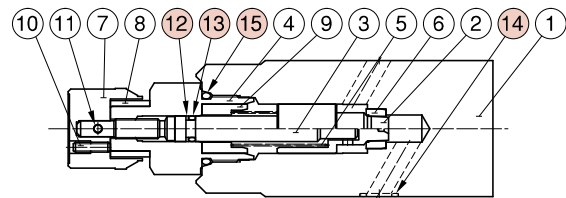
MSCP-03



Approx. Mass.....3.0 kg

List of Seals

MSCP-03



Item	Name of Parts	Part Numbers	Qty.
12	Back-up Ring	900-VK411915-2	1
13	O-Ring	OR NBR-70-1 P7-N	1
14	O-Ring	AS568-014 (NBR-90)	5
15	O-Ring	OR NBR-90 P24-N	1