

Check and Throttle Modular Valves

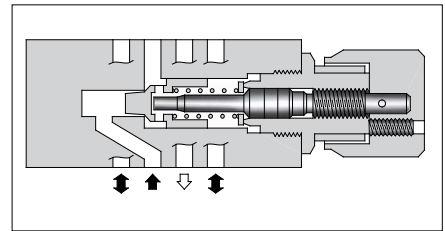
Specifications

Model Numbers	Max. Operating Pressure MPa	Max. Flow L/min
MSCP-01-30	31.5	35 *

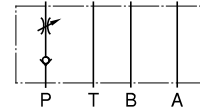
★At the low differential pressure, maximum flow is limited. See "Pressure Drop at Throttle Fully Open".

Model Number Designation

MSCP	-01	-30
Series Number	Valve Size	Design Number
MSCP: Check and Throttle MSCP: Valve for P-Line	01	30



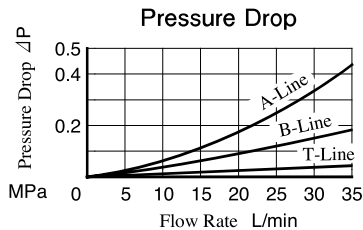
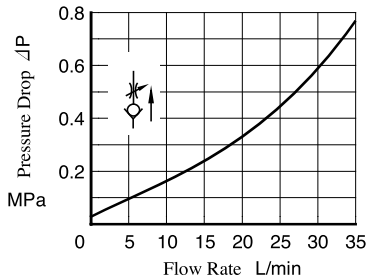
Graphic Symbol



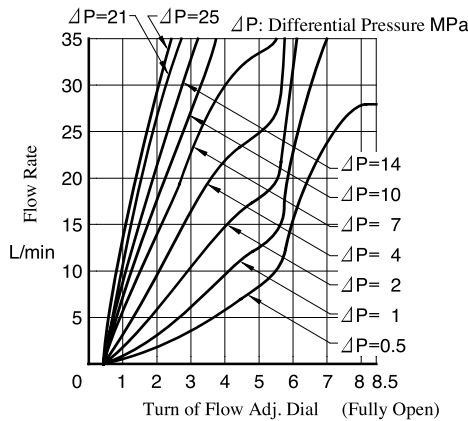
Typical Performance Characteristics

Hydraulic Fluid: Viscosity 35 mm²/s, Specific Gravity 0.850

Pressure Drop at Throttle Fully Open



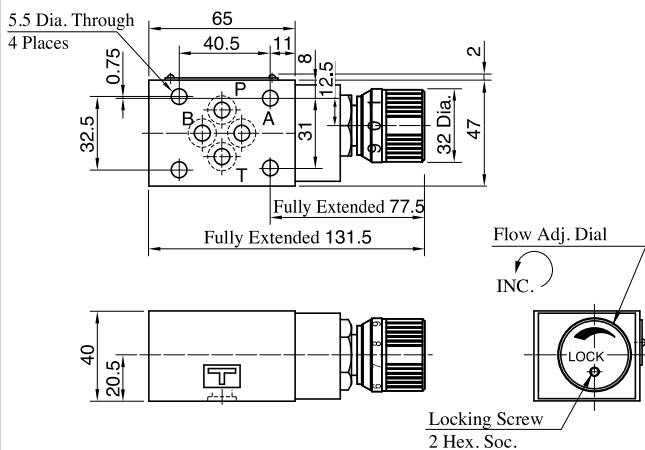
Metered Flow vs. Dial Position



Instructions

- To make flow rate adjustment, loosen locking screw for the dial and turn the flow adjustment dial clockwise or anti-clockwise. For a decrease of flow, turn the dial clockwise. Be sure to re-tighten the locking screw firmly after the adjustment of the flow rate.

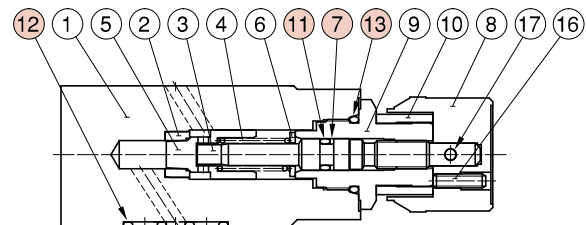
MSCP-01



Approx. Mass.....1.2 kg

List of Seals

MSCP-01



Item	Name of Parts	Part Numbers	Qty.
7	Back-up Ring	BR JIS B 2401-4-T2-P6	1
11	O-Ring	OR NBR-70-1 P6-N	1
12	O-Ring	OR NBR-90 P9-N	4
13	O-Ring	OR NBR-90 P18-N	1